

OF FARMERS AND BREEDERS OF SEDGWICK COUNTY

Wilson, Robert W....Annes, Gen. Del.
 Wiske, W. C.....Garden Plain, R. 1
 Wood, James H...Valley Center, R. 1
 Woodard, Vollie L.....Maize, R. 1
 Yoder, Heman.....Cheney, Gen. Del.
 Young, Robert C.....Colwich, R. 1
 *Yungmeyer, J. M., Sr...Wichita, R. 6
 Yungmeyer, Oscar A....Wichita, R. 6

JERSEY

Baker, William P.....Furley, R. 1
 Brand, George J...Garden Plain, R. 1
 De Witt, Arthur C.....Wichita, R. 3
 Gorman, David F....Greenwich, R. 1
 Ewertz, M. J.....Maize, R. 1
 Halderman, C. H.....Goddard, R. 2
 Hickling, C. J.....Mt. Hope, Box 21
 Hutchinson, Sauford S..Goddard, R. 2
 *June, William.....Wichita, R. 6
 Koster, George, Sr..Garden Plain, R. 1
 Landon, George W.....Wichita, R. 1
 *Lill, Percy E.....Mt. Hope, R. 2
 Lockard, John A.....Wichita, R. 1
 McPherson, Samuel W..Wichita, R. 9
 Marsh, William H....Valley Center
 Nebergall, Clyde...Valley Center, R. 1
 *Palmer, Charlie B.....Wichita, R. 7
 *Pipkin, Oscar S...Garden Plain, R. 1
 Pruitt, John H.....Goddard, R. 2
 Robinson, William J.....Viola, R. 1
 Roll, Frank D.....Wichita, Gen. Del

Roof, Donald S.....Maize, R. 1
 Roof, William J.....Maize, R. 1
 Schauf, William.....Cheney, R. 3
 Shepherd, Nelson J....Sedgwick, R. 1
 *Shouts, David.....Wichita, R. 8
 Simerl, George D.....Sedgwick, R. 3
 Stauffer, Andrew G..Valley Ctr., R. 1
 Stauffer, Paul J..Valley Center, R. 1
 Sullivan, Elizabeth D...Wichita, R. 1
 Sullivan, Robert D. R...Wichita, R. 1
 Thompson, Douglas...Valley Ctr., R. 1

HOGS

HAMPSHIRE

*Brookings, Edgar R....Wichita, R. 6
 *Brookings, John G....Wichita, R. 6
 Bush, Frank.....Mulvane, R. 2
 Lower, Archie.....Wichita, R. 4
 *Shaw, Walter.....Wichita, R. 6
 Yazel, Gene L.....Furley, R. 1

O. I. CHESTER WHITE

Carey, Joshua....Valley Center, R. 2
 *Davidson, Thomas S....Derby, R. 3
 Ewertz, M. J.....Maize, R. 1
 Grier, Andrew.....Viola, R. 1
 *Hannon, Leonard L....Wichita, R. 6
 Hill, Loren A.....Maize, R. 1
 Hilliard, John L.....Sedgwick, R. 1

GLASGOW TAILORS AND HATTERS

Ladies' and Gents' Hats Cleaned and Re-blocked Any Shape or Style

Also remember that when you want your clothes cleaned or hats blocked, wrap them and give them to your rural route carrier and we will return them to you postage prepaid.

SUITS AND OVERCOATS MADE TO ORDER

109 S. Lawrence St.

Phone Mkt. 533

Second Door South of Princess Theatre

Allender Sewing Machine Exchange

224 North Main

Phone Mkt. 1533

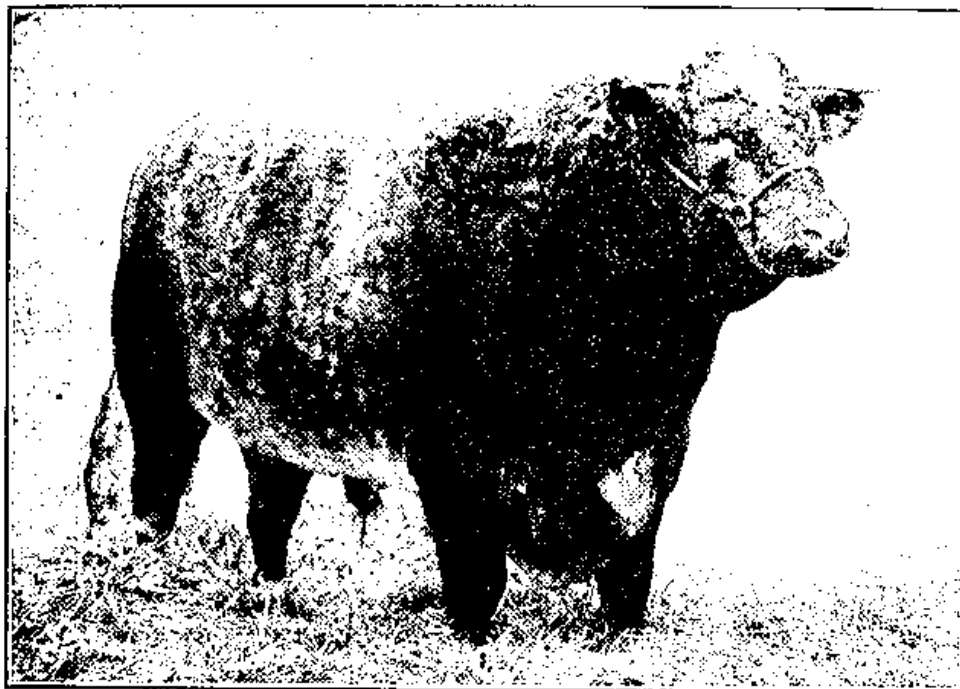
Rebuilt and Guaranteed Machines, All Makes and Prices.

Also All Makes of New Machines.

General Novelty Repair Shop

Before Buying That Sewing Machine, Do Not Fail to See Our Stock and Get Prices.

PARK PLACE



Imported Bapton Corporal 598857, Grand Champion 1920, Denver, Wichita, Ft. Worth.

A great herd of select females, representing all the leading Scotch families, headed by three great herd bulls—Imported Bapton Corporal 598857, Imported British Emblem and Missies Last. In this herd belong both grand champions of the spring shows at Denver, Wichita and Fort Worth.



PARK E. SALTER

615 Fourth Natl. Bank Bldg.

Wichita, Kansas.

OF FARMERS AND BREEDERS OF SEDGWICK COUNTY

SHORTHORNS



Lady Supreme, Junior and Grand Champion Female 1920, Denver, Wichita, Ft. Worth.

← Always breeding stock for sale at reasonable prices. Buy pure breds at home; there are none better. Have recently purchased a farm in Sedgwick county and it is being equipped as an ideal place for breeding good Shorthorns. All visitors are welcome.

PARK E. SALTER

615 Fourth Natl. Bank Bldg.

Wichita, Kansas.



Sir Aaggie Korndyke Mead, Born November 15, 1918.

His sire is from the famous 1331-lb. cow, Aaggie Acme of Riverside 2nd, who holds the world's championship for strictly official working butter record.



Merdu Artis Clothilde 135942, Whose Record Appears on the Opposite Page.

The Swinehart Holstein Farm

The Home of

MERDU ARTIS CLOTHILDE 135942, whose record is as follows:

Milk 7 days.....	573.8 lbs.
Butter 7 days	24.51 lbs.
Highest day's milk	98.2 lbs.

ANNA PIETERTJE PONTIAC PET 254880, record as follows:

Milk 7 days.....	551.6 lbs.
Butter 7 days	24.66 lbs.
Highest day's milk	91.6 lbs.

RHODA ALCARTA NETHERLAND 314550, who has the following record:

Butter 7 days at 4 years old.....	22.38 lbs.
Highest day's milk	93.50 lbs.

The above cows will shortly finish their yearly test.

All cows on the Swinehart Farm are tested for official records which are open for inspection at all times. All cattle are tuberculin tested and are sold on a 60-day re-test.

Satisfaction is guaranteed in each and every transaction.

**Buy Pure Breds at Home. There are None Better.
Secure the Best That Money Can Buy.**

Registered Pure Bred Holstein Cows and Calves On Sale At All Times.

EUGENE SWINEHART, Proprietor
Derby R. F. D. No. 2, or Phone Rosehill 216 and we will meet all trains
at Derby.

CRESCENT STOCK FARM

O. B. McKnight, Prop.

Breeder of Pure Bred Holstein Cattle



Herd Headed by Sir Aaggie Korndyke Mead, Born November 15, 1918.
Pure Bred Holstein Cows and Calves For Sale at All Times.
A Few Good Grades For Sale.

DERBY, R. F. D. No. 2.

1 $\frac{3}{4}$ Miles West of Roschill

Phone 217 Roschill

IF DEAD

We Want Them

HORSES

CATTLE

SHEEP

HOGS

The Wichita Dessicating Co.

Phones Mkt. 4495-207

Wichita, Kansas

OF FARMERS AND BREEDERS OF SEDGWICK COUNTY

- | | |
|---|--|
| Horton, George A....Valley Ctr., R. 1
*Kohler, August.....Cheney, Box 93
*Kohler, Henry.....Cheney, R. 2
McCormick, C. A..Valley Center, R. 2
Mercer, Walter F.....Viola, R. 1
*Shepherd, Charles W.....Furley, R. 1
Spunier, Howard H.....Cheney, R. 2
Ulbrich, Robert A.....Sedgwick, R. 1
*Wilburn, Claude J.....Wichita, R. 5
Williamson, David B....Wichita, R. 1
*Winter, Salome.....Andale, R. 1
Wolf, Roy C.....Cheney, R. 3 | *Cornett, James O.....Wichita, R. 6
Corr, John W.....Viola, R. 1
Craig, Robert M...Valley Center, R. 1
Crandall, Lucius W....Sedgwick, R. 1
Creasser, Wm. K..Valley Center, R. 3
Culver, R. L.....Wichita, R. 1
Dalbone, Martin.....Viola, R. 1
*Davis, William.....Clearwater, R. 2
Diefenbach, Otto.....Wichita, R. 9
Dobbin, Arthur B....Clearwater, R. 2
Dodd, Harry.....Wichita, R. 9
Engel, Peter A.....Matze
Erwin, Charles W.....Wichita, R. 1
*Ewing, G. G.....Viola, R. 1
Farmer, Elsie A.....Wichita, R. 1
Fisher, George W....Valley Ctr., R. 2
Foley, Edward F..Valley Center, R. 3
Fortney, Wm. C...Valley Center, R. 1
Freund, John.....Andale, R. 1
Gabrielson, Emil.....Wichita, R. 8
Hadley, Lawrence N..Valley Ctr., R. 3
Hart, George B...Valley Center, R. 2
Hawley, Charles F.....Viola, R. 1
Hein, F. W.....Andale, R. 1
Hoag, Zina A.....Wichita, R. 9
Hoover, William C.....Wichita, R. 9
Hopkins, Robert.....Derby, R. 2
Hostetter, Florence.....Wichita, R. 1
*Huff, W. E.....Wichita, R. 6
Jaax, Edward, Jr.....Goddard, R. 2 |
|---|--|

DUROC JERSEY

- | | |
|---|--|
| Albers, Herman H.....Andale, R. 1
Anderson, James W....Wichita, R. 1
Barnes, Aaron H.....Wichita, R. 1
*Benner, Orpha W.....Wichita, R. 6
Blubaugh, C. U.....Sedgwick, R. 3
Bohn, Roy M....Valley Center, R. 3
Brandis, Wm. M..Garden Plain, R. 1
Bright, Thomas A...Valley Ctr., R. 2
*Brookings, Edgar R....Wichita, R. 6
Brookings, John G.....Wichita, R. 6
Brown, Elmer C.....Wichita, R. 2
*Brown, Sarah A.....Wichita, R. 6
Brush, William H.....Wichita, R. 3
Bump, Daniel R., Jr..Valley Ctr., R. 2
Burley, John A.....Wichita, R. 1
Campbell, Sydney B....Wichita, R. 8
Clasen, Nick.....Cheney, R. 3 | *Ewing, G. G.....Viola, R. 1
Farmer, Elsie A.....Wichita, R. 1
Fisher, George W....Valley Ctr., R. 2
Foley, Edward F..Valley Center, R. 3
Fortney, Wm. C...Valley Center, R. 1
Freund, John.....Andale, R. 1
Gabrielson, Emil.....Wichita, R. 8
Hadley, Lawrence N..Valley Ctr., R. 3
Hart, George B...Valley Center, R. 2
Hawley, Charles F.....Viola, R. 1
Hein, F. W.....Andale, R. 1
Hoag, Zina A.....Wichita, R. 9
Hoover, William C.....Wichita, R. 9
Hopkins, Robert.....Derby, R. 2
Hostetter, Florence.....Wichita, R. 1
*Huff, W. E.....Wichita, R. 6
Jaax, Edward, Jr.....Goddard, R. 2 |
|---|--|

W. D. McComas

Thomas Farm

Breeder of Registered Pure Bred

Duroc Jersey Swine

Stock For Sale at All Times

Wichita, Kansas

R. F. D. No. 8

AMERICAN REALTY CO.

City Property

Farm Lands

Exchanges

Insurance

Rentals

Loans

We deal in real estate of all kinds and have experienced men at the head of each department of our business. If you wish to buy, sell or exchange, write or call upon us. We can please you. We handle property in every state of the Union.

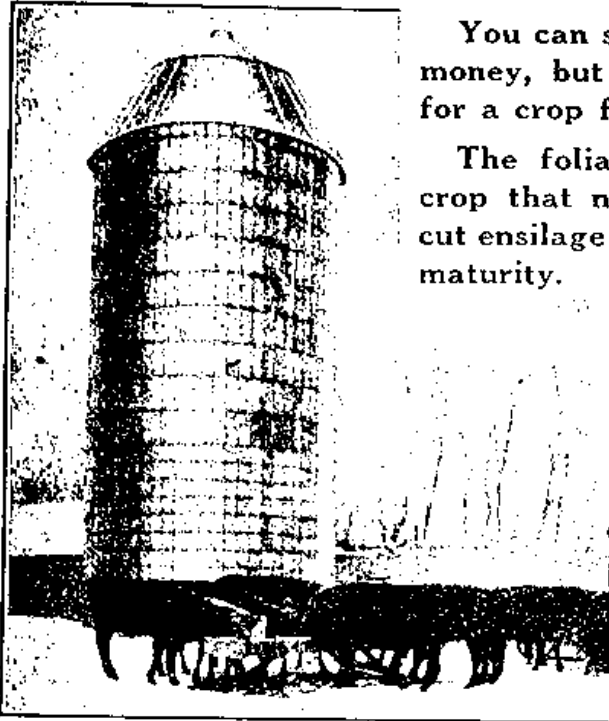
AMERICAN REALTY CO.

124 E. First Street

Phone Market 1929

WICHITA, KANSAS.

OF FARMERS AND BREEDERS OF SEDGWICK COUNTY



You can sell fat cattle for real money, but you can't get much for a crop failure.

The foliage crop is the only crop that never fails. You can cut ensilage crops at any stage of maturity.

We offer an attractive discount for early orders.

Write For Our Catalog

**The Interlocking
Cement Stave
Silo Co.**

Wichita, Kansas.

Do You Raise Poultry or Hogs?

Better results are obtained by using
OTTO WEISS POULTRY FEEDS
Balanced Rations for Chick and Hen

Fatten Your Hogs With
O. W. TANKAGE HIGH PROTEIN FEED

OTTO WEISS MILLING CO.

Wichita, Kansas.

THE KANSAS FARMER AND MAIL & BREEZE DIRECTORY

- Jacques, Fred C. Valley Center, R. 2
 Johnson, John H. Clearwater, R. 2
 Jones, Arthur C. Wichita, R. 9
 *Jones, William A. Peck, R. 1
 Joseph, Francis M. Furley, R. 1
 *June, William Wichita, R. 6
 Keil, Robert C. Derby, R. 1
 Kelso, Van R. Valley Center, R. 3
 Kessler, George H. Wichita, R. 8
 *Kirby, Arthur Wichita, R. 6
 Koster, Geo. Sr. Garden Plain, R. 1
 *Krausberg, Chris. Wichita, R. 6
 Landon, E. L. Derby, R. 3
 Leichardt, Gustave A. Viola, R. 1
 *Lendertse, Jacob M. Oatville, R. 1
 Leonard, Robert P. Maize, R. 1
 *Long, Robert M. Derby, R. 3
 *Loomis, A. D. Cheney, R. 2
 Lowry, Garret J. Valley Center, R. 3
McComas, W. D. Wichita, Box 455
 *McGlynn, Pat. Goddard, R. 2
 *McMillen, Bonar S. Wichita, R. 6
 *Marsh, Nat W. Goddard, R. 1
 Martin, Edward. Colwich, R. 2
 Mayall, Wm. W. Valley Center, R. 1
 *Means, Marcus, C. Derby, R. 3
 Meyer, Bernard B. Wichita, R. 8
 More, J. L. Anness, R. 1
 *Morris, Joseph D. Wichita, R. 6
 Peltzer, Henry J. Andale, R. 1
 Pennick, John F. Wichita, R. 1
 Peterson, Charles A. Wichita, R. 9
 Pike, Charles. Goddard, R. 1
 Pipkin, Levi R. Cheney, R. 2
 Pipkin, Oscar S. Garden Plain, R. 1
 Prilliman, Harry. Viola, R. 1
 Pruitt, John H. Goddard, R. 2
 *Reeves, Ben. Wichita, R. 7
 Renner, Martin C. Wichita, R. 9
 Rickard, Charles W. Wichita, R. 1
 *Rogers, Grover H. Peck, R. 1
 Roungh, Louis E. Valley Center, R. 3
 *Rorabaugh, Delos. Wichita, R. 6
 *Russell, William S. Wichita, R. 6
 Schopf, Henry W. Wichita, R. 1
 *Seiler, Peter C. Maize, R. 1
 Seiler, Peter. Colwich, R. 1
 *Sence, Jesse. Peck, R. 1
 *Shaver, S. H. & A. R. Wichita, R. 7
***Shaw, Walter Wichita, R. 6**
 *Short, James E. Mulvane, R. 1
 Sittler, Louis T. Goddard, R. 1
 *Slade, Stephen R., Sr. Wichita, R. 7
 Smith, Andrew J. Wichita, R. 1
 Smith, Richard C. Sedgwick, R. 1
 Smith, William. Wichita, R. 7
 Spexarth, Bernard J. Colwich, R. 1
 Stamback, Charles E. Sedgwick, R. 2
 Stanley, James O. Wichita, R. 5
 Stauffer, Andrew G. Valley Ctr. R. 1
 Stauffer, Paul J. Valley Center, R. 1
 *Stearns, Lee L. Wichita, R. 6



Picture of First Prize Carload Lot Hogs. Chicago International Hampshires Won Both First and Second Over All Breeds, December, 1919.

Breeding stock, all ages, for sale. I have Virginia 1st No. 75316, only sister litter mate to world's high-priced sow, Virginia. All registered and immune. Farm 11 miles south of Wichita.

WALTER SHAW

Rural Route 6

Wichita, Kansas

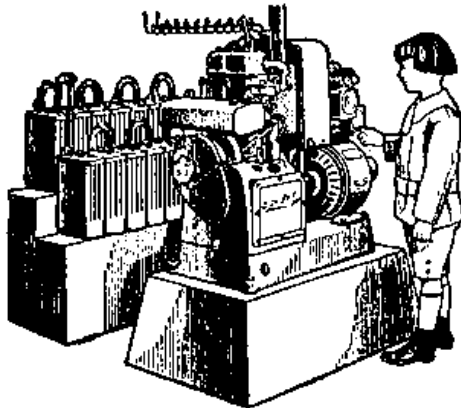
Phone Derby, Kansas

OF FARMERS AND BREEDERS OF SEDGWICK COUNTY

The Most Reliable Farm Power and Light Plant

Genco Light

A bigger and better plant, all made in one factory. You will understand and like its simple, sturdy appearance. BURNS GASOLINE OR KEROSENE. LOW SPEED—LONG LIFE.



Very economical. A size for any need. Many satisfied users who have had their plants from one to four years. More power because of the pulley.

IMMEDIATE DELIVERIES

Electricity, Man's Most Dependable Servant.
For Particulars Write

Genco Light Company

210 E. Fourteenth

Kansas City, Mo.

- | | |
|--|--|
| Stecher, Leopold.....Wichita, R. 1 | *Dery, Clarence E.....Outville, R. 1 |
| Steele, Albert W.....Wichita, R. 9 | Diefenbach, Otto.....Wichita, R. 9 |
| Stephens, Thomas T., Valley Ctr., R. 2 | Dold, Simon.....Colwich, R. 1 |
| *Stuckey, Grover E.....Wichita, R. 6 | Drollinger, Charles T....Wichita, R. 4 |
| *Stuckey, Willis L.....Wichita, R. 6 | Fox, Charles C.....Wichita, R. 9 |
| *Swaney, Frank W.....Derby, R. 3 | *Frey, John G.....Wichita, R. 4 |
| Torkelson, John Sr.....Maize, R. 1 | Fritz, Leroy A.....Maize |
| *Vilm, Nicolas M.....Wichita, R. 7 | Garnett, John B.....Garden Plain |
| *Volekman, Emil....Garden Plain, R. 1 | Garnett, J. T.....Garden Plain, R. 1 |
| Vollbracht, Chris....Wichita, Box 587 | Garrison, M.....Cheney, Box 172 |
| Wadsworth, John F.....Maize | Georges, Louis.....Andale, R. 1 |
| Warner, William F.....Cheney, R. 3 | Giles, Alva G.....Sedgwick, R. 3 |
| *Wilkinson, F. E.....Sedgwick, R. 3 | *Glaser, Albert.....Wichita, R. 6 |
| *Williams, C. D.....Wichita, R. 8 | Graham, Clyde W....Valley Ctr., R. 2 |
| Wilson, Charles I.....Wichita, R. 9 | Graudfield, Edwin H....Wichita, R. 9 |
| *Wilson, Guy E.....Wichita, R. 6 | Graudfield, George T....Wichita, R. 9 |
| Wilson, Jack A....Valley Center, R. 2 | Gregory, Ernest S.....Viola, R. 1 |
| Winters, Roy R....Valley Center, R. 3 | Gregory, Lon M.....Goddard, R. 2 |
| Young, Ernest L.....Wichita, R. 7 | *Guest, Norman.....Wichita, R. 6 |
| Zogelmann, George....Mt. Hope, R. 2 | Hartman, E. H. W....Valley Ctr., R. 3 |
| POLAND CHINA | |
| Anderson, James W....Wichita, R. 1 | *Hisken, Russell.....Wichita, R. 3 |
| Andra, John.....Andale, R. 1 | *Hohn, Hobert.....Wichita, R. 8 |
| Billings, David.....Wichita, R. 9 | Hornecker, Edward.....Maize, R. 1 |
| Blake, Charles G. C....Sedgwick, R. 3 | *Howrey, Jasper.....Furley, R. 1 |
| Brewer, Charles E.....Mt. Hope, R. 1 | *Johnson, Herman J..Clearwater, R. 2 |
| *Brooks, Fred M.....Wichita, R. 7 | *Johnson, Isaac V.....Wichita, R. 3 |
| *Bruce, Jephtha D.....Sedgwick, R. 2 | *Johnston, Clark V....Greenwich, R. 1 |
| Carter, Willis.....Wichita, R. 3 | *Jones, Seth E....Hayesville, Box 116 |
| Olfe, Frank F.....Colwich, R. 1 | *Jordau, Ernest G.....Wichita, R. 8 |
| | Karse, William M.....Anness, R. 1 |

Dr. Huls & Rosenberry



Graduate Veterinarians



HOSPITAL 438 N. MAIN ST.

Equipped with all modern improvements for
the care of animal patients

We Do a General Practice and Make Calls Day and Night

We also specialize in the treatment of pure
bred livestock and sterility of
pure bred animals

Office Phone Market 571

DR. HULS
Res. Phone
Mkt. 5576

DR. ROSENBERY
Res. Phone
Mkt. 7828

Hospital and Office: 438 N. Main St.
WICHITA, KANSAS

Dunn Mercantile Company

EIGHTEEN GOOD STORES

Wichita Augusta Towanda
Mulvane Cheney
Ponca City

The Company That

LEADS THEM ALL IN KANSAS

Carries the largest volume of business
in force ever placed upon the books of
any Kansas Life Insurance Company.

**Our Business Policy—Good Business, Clean
Business, Conservative Business.**

**The Farmers and Bankers
Life Insurance Co.**

Wichita, Kansas

**We Are Prepared to Fill
Any Formula or
Prescription**

We also sell the Guaranteed
Lee's Stock and Poultry Feeds.
Give them a trial.

E. L. FEAGAN
Druggist

Cheney

Kansas

**THE FOURTH
NATIONAL BANK**

Wichita, Kansas

Capital \$1,000,000.00

Surplus \$200,000.00

C. L. Davidson, Chairman of Board

Dan. P. Callahan, President

H. E. Chase, Vice Pres.

E. E. Bleckley, Vice Pres.

L. C. Kelley, Cashier

Drew McLean, Asst. Cashier

F. L. Alban, Asst. Cashier

H. M. Steinbuechel, Asst. Cashier

Reese & Company

**REAL ESTATE
INSURANCE
LOANS**

Second Floor Reese Building
218 E. Douglas Ave.
WICHITA

West Side Coal Co.

D. O. Williams, Mgr.

If you need any coal to keep the
house warm, or any lime, cement,
stone, brick, or sewer pipe, stop
and see us. We are also exclusive
agents for the

**Dickey Hollow
Tile Silo**

720 W. Douglas Ave.
Phone Market 295
Wichita, Kansas.

OF FARMERS AND BREEDERS OF SEDGWICK COUNTY

- | | |
|---|---|
| Kennedy, C. P. Valley Center, R. 1
*Knebler, John J. Bayneville, R. 1
Kortz, Herman. Maize, R. 1
*Kratzer, R. L. Garden Plain, R. 1
Landwehr, Joe H. Andale, R. 1
Linnebur, Joe. Garden Plain, R. 1
Longenecker, B. W. Wichita, R. 1
Loomis, Ralph. Garden Plain, Box 50
Lorenz, Frenze J. Cheney, R. 3
*McCann, Arthur J. Furley, R. 1
*McClullen Geo. S. Oatville, R. 1
Maddox, J. W. Valley Center, R. 1
Martin, C. R. Mulvane, Box 151
Mayall, J. R. Valley Center, R. 3
Meyer, George H. Sedgwick, R.
*Miller, Elmer E. Wichita, R. 6
*Miller, Howard E. Wichita, R. 6
Miller, Robert E. Goddard, R. 2
*Moody, Hubert M. Wichita, R. 6
Nebergall, Clyde. Valley Center, R. 1
Nichols, Wm. E. Valley Center, R. 3
O'Brien, William H. Anness, R. 1
Ortman, Fretz. Anness, R. 1
Paff, Roy. Sedgwick, R. 1
*Palmer, Charles B. Wichita, R. 7
*Pike, Archie G. Goddard, R. 1
Purkey, Jerry G. Sedgwick, R. 2
Quinlisk, Leslie A. Wichita, R. 7
Rausch, Nicklos. Andale, R. 1
Reed, L. B. Mt. Hope, Box 50 | Regan, William. Colwich, R. 1
*Renner, August J. Andale, R. 1
Renner, George. Anness, R. 1
*Rich, Carl V. Wichita, R. 6
*Rogers, Edward C. Peck, R. 1
*Sargent, Roy V. Wichita, R. 6
Seiler, Leonard H. Colwich, R. 1
Seiwert, Edward. Andale, R. 1
Shine, Wilbur. Derby, R. 2
Shipley, C. W. Goddard, R. 2
*Shonts, David. Wichita, R. 8
Sigg, George. Garden Plain, R. 1
Simon, Frank M. Colwich, R. 2
Simon, William J. Maize, R. 1
Smith, Glenn C. Sedgwick, R. 3
Smith, J. E. Garden Plain, Box 150
*Stevens, Victor H. Wichita, R. 6
*Swinelhart, Eugene. Derby, R. 2
Thompson, Ada. Cheney, Box 111
*Thompson, L. J. Garden Plain, R. 1
*Van Vorris, Claude. Wichita, R. 5
Voegeli, John. Colwich, R. 2
Walters, William. Colwich, R. 1
*Warren, Ezra T. Clearwater, R. 3
*Weir, Robert S. Oatville, R. 1
*Webb, Charles B. Wichita, R. 4
Webb, Fred E. Wichita, R. 1
Whitmer, William H. Derby, R. 1
Wilson, Harry W. Valley Center, R. 2
Winters, John W. Colwich, R. 1 |
|---|---|

HENRY COMLEY
President

CHAS. H. SMYTH
Vice President

W. H. COMLEY
Sec. and Treas.

The Comley Lumber Company

General Offices, Wichita, Kansas

SUITE 905-6 BEACON BLDG.

YARDS

Andale Colwich Goddard Cheney
 Garden Plain

Circular Mailing
Envelope Addressing
Multigraph Letters

Mimeograph
Mailing Lists
Filling-in Letters

Form Letters

The Brooks Letter and Addressing Co.

LETTER SPECIALISTS

901 Beacon Bldg.
Phone Mkt. 472.
Wichita, Kansas

We also operate a job printing plant in connection
with our letter shop.

Kansas Independent Laundry Dry Cleaners

TO THE FARMER AND HIS FAMILY

Mail Us Your Clothing For Dry Cleaning
by Parcel Post.

"WE GIVE QUICK SERVICE"
As Close as Your Mail Box.

302 North Emporia. Phones Mkt. 195-653

OF FARMERS AND BREEDERS OF SEDGWICK COUNTY

Larsen Hardware Company

Mt. Hope, Kansas.

FARM WAGONS AND IMPLEMENTS
HARDWARE, HARNESS AND BUGGIES

Heider Tractors, Loudon Hay
Tools, Great Western and De La-
val Separators, Fisk Tires, Ma-
jestic Ranges, Garland Stoves and



Furnaces, Monarch Paints, D. E.
Tools and Cutlery, American
Fence, Plymouth Twine and Rope.
A Full Line of Farm Implements.

WE SELL AND RECOMMEND THE ABOVE KNOWN QUALITY GOODS

Sedgwick State Bank

Capital \$50,000.00 "Safety With Service" Surplus \$15,000.00

We especially solicit the accounts of farmers and are prepared to extend every courtesy consistent with sound banking methods. If you require any assistance or any advice in regard to financial matters, call on us.

REAL ESTATE AND INSURANCE

Directors
P. E. Gingrass
B. C. Morrison

Officers
C. A. Seaman, President Chas. C. Hart, Cashier
John McGinn, Vice Pres. T. E. Thorne, Asst. Cashier
SEDGWICK, KANSAS.

The Carl Graham Paint & Wall Paper Company

—
Save the Surface and
You Save All
—

See Us At Our New
Location
—



The Carl Graham Paint and Wall Paper Co.

Butts Building—First and Lawrence
Wichita, Kansas.

THE STATE BANK

Of Peck, Kansas

The Friendly Bank

Capital \$10,000.00

Surplus \$10,000.00

OUR POLICY:
Security For Our Loans

JOHN FERRITER

American State Bank Bldg.

Phone Douglas 559

Wichita, Kansas.

**Real Estate, Fire Insurance
and Loans**

Reference:
Any Bank in the City

- Wolf, William.....Cheney, R. 3
- *Yungmeyer, J. M.....Wichita, R. 6

SPOTTED POLAND CHINA

- Baker, Aaron W.....Wichita, R. 2
- *Bally, R. L.....Wichita, R. 3
- Bassett, Lewis J...Valley Center, R. 2
- *Blank, Frederick W....Wichita, R. 4
- Botts, Arthur D...Valley Center, R. 3
- Brooks, Vorhis C...Valley Center, R. 3
- *Carnahan, A. J.....Greenwich, R. 1
- Collier, Fred H.....Wichita, R. 2
- Cooper, Wallace K...Valley Ctr., R. 1
- Corkill, Elmer.....Sedgwick, R. 3
- Crider, Chas. A...Valley Center, R. 2
- Cross, Oades.....Sedgwick, R. 2
- Drollinger, Charles T...Wichita, R. 4
- Duncan, Al B....Valley Center, R. 3
- *Faulkner, Carl W.....Viola, R. 1
- Froman, Earl.....Sedgwick, R. 1
- Fry, Kenneth S.....Sedgwick, R. 3
- Greenup, Earl.....Valley Center
- Humboldt, William....Mulvane, R. 2
- Humbolt, Iven.....Mulvane, R. 2
- *Jewell, John C....Valley Center, R. 1
- Jewell, Roy F.....Furley, R. 1
- *Kerby, Roy E.....Peck
- Knebler, C. J.....Benton, R. 1
- *Leach, Martin B.....Furley, R. 1
- *Lee, Ross B.....Clearwater, R. 2

- *Luening, Henry C.....Wichita, R. 3
- Mahannah, Alva.....Sedgwick, R. 1
- Markel, Ed. M....Valley Center, R. 2
- Matthews, Earl J...Clearwater, R. 1
- Miller, Wesley H.....Furley, R. 1
- *Mooberry, Don C.....Wichita, R. 3
- Newell, George A.....Wichita, R. 1
- Nichols, Wm. E...Valley Center, R. 3
- Overman, Harry L.....Wichita, R. 2
- Perkins, E.....Sedgwick, R. 3
- Potts, William H.....Wichita, R. 3
- Raymond, Charles R...Sedgwick, R. 3
- Scott, Anson S.....Wichita, R. 3
- Seiple, Edmond S....Wichita, R. 2
- Shipley, H. M....Valley Center, R. 1
- Smith, Oren.....Valley Center, R. 1
- Smith, T. Walter.....Wichita, R. 2
- *Sparks, Albert W....Clearwater, R. 3
- Thompson, G. R...Valley Center, R. 1
- Weddle, William T....Wichita, R. 2
- Wilson, Wm. T.....Sedgwick, R. 3

HORSES

BELGIAN

- Putifer Brothers.....Burton, R. 2
- Salmons, Oscar.....Wichita, R. 8

FRENCH DRAFT

- Rea, Wm. S.....Wichita, R. 3