

OF FARMERS AND BREEDERS OF SEDGWICK COUNTY

SEDGWICK COUNTY BREEDERS' DIRECTORY

This list includes all Farmers in Sedgwick County who own one or more purebred animals. Star (*) indicates farmers who raise breeding stock for sale. Names of breeders in black face type indicate that breeder as having an advertisement in this book.

BEEF CATTLE

ABERDEEN ANGUS

Blubaugh, C. U.....Sedgwick, R. 3
Carey, Joshua.....Valley Center, R. 2
McIntosh, Harvey S.....Cheney, R. 3
Meredith, J.....Cheney, R. 3
Steele, Harry E.....Maize, R. 1
Williams, George G.....Sedgwick, R. 3
Williams, Mary.....Sedgwick, R. 3

GALLOWAY

Brown, Howard.....Cheney, R. 3
Southern, James D.....Colwich, R. 1

HEREFORD

Bausch, Peter.....Cheney, R. 3
Bergkamp, B. H.....Cheney, R. 2
Brush, Lawrence G.....Wichita, R. 2
Buchholz, Charlie.....Garden Plain, R. 1
Comer, Charles M.....Valley Ctr., R. 1
Dalbous, Martin.....Viola, R. 1
Fisher, Henry J.....Wichita, R. 7
Garnett, J. T.....Garden Plain, R. 1
Garnett, Lement.....Cheney, R. 3
Gregory, Ernest S.....Viola, R. 1
Guetschow, Otto W.....Cheney, R. 3
Haas, Arthur W.....Wichita, R. 2
Irsik, Lawrence.....Andale, R. 1
Jaax, Ed. Jr.....Goddard, R. 2
*Johnson, August.....Clearwater, R. 2
Johnson, Edward T.....Viola, R. 1
Johnson, Herman J.....Clearwater, R. 2
Knight, William H.....Wichita, R. 2
Kohler, Henry.....Cheney, R. 2
Krauss, Jacob G.....Sedgwick, R. 2
Landon, E. L.....Derby, R. 3
Leichardt, Gustave A.....Viola, R. 1
Lentz, Herman.....Cheney, R. 3
Lory, John.....Garden Plain, R. 2
Lygrisse Bros.....Greenwich, R. 1
Mercer, Walter F.....Viola, R. 1
Moss, David C.....Valley Center, R. 2
Moss, George W.....Wichita, R. 2
Nelson, Otis.....Viola, R. 1
O'Brien, William H.....Anness, R. 1
*Ocker, L. E.....Kechi
Osburn, E. W.....Viola, R. 1
Reep, Simen.....Anness, R. 1
Rose, David.....Valley Center, R. 2
Schreder, Henry.....Garden Plain, R. 1
Scott, Pleasant H.....Wichita, R. 2

*Swanson, Arthur W.....Valley Ctr., R. 2
Tjadeu, Joe.....Valley Center, R. 2
Underwood, William M.....Derby, R. 3
*Venjohann, Arnold L.....Andale, R. 1
Venjohann, John.....Andale, R. 1
Walworth, Thomas C.....Wichita, R. 1
Warner, William F.....Cheney, R. 3
Watson, Frank E.....Peck, R. 1
Watt, Hugh R.....Clearwater, R. 2
Williams, George T.....Sedgwick, R. 3
Williams, Michael L.....Valley Ctr., R. 3
Wulf, D. F.....Cheney, R. 3

RED POLLED

Black, Gilbert.....Anness, R. 1
Brandis, Wm. M.....Garden Plain, R. 1
Doyle, W. R.....Garden Plain
Fox, Charles C.....Wichita, R. 9
*Kramberg, Chris.....Wichita, R. 6
Kratzer, R. L.....Garden Plain, R. 1
Lorenz, C. E.....Cheney, R. 3
Lorenz, Frenze J.....Cheney, R. 3
Marx, Nicholas.....Mt. Hope, R. 2
Nicholson, Harry.....Colwich, R. 1
Peltzer, Henry J.....Andale, R. 1
Sandusky, Cassius M.....Wichita, R. 9
Synder, Tillman H.....Wichita, R. 4

SHORTHORN

Adamson, Joseph A.....Valley Ctr., R. 3
Albers, Herman H.....Andale, R. 1
Applegate, Lester L.....Wichita, R. 2
*Bigelow, Lutrel.....Wichita, R. 7
Boyd, James S.....Wichita, R. 1
*Buerki, Fred.....Wichita, R. 7
Bump, Daniel R.....Valley Center, R. 2
Byers, William P.....Wichita, R. 2
Cadwell, Frank C.....Valley Center, R. 3
*Cain, James D.....Wichita, R. 6
Case, Omar.....Wichita, R. 1
Clasen, Nick.....Cheney, R. 3
*Cochran, James B.....Peck, R. 1
Custer, I.....Wichita, R. 9
*Davidson, Thomas S.....Derby, R. 3
Diller, Will.....Mulvane, R. 2
Doffing, George E.....Colwich, R. 1
Dold, Simon.....Colwich, R. 1
Doles, Harry R.....Cheney, R. 3
Downing, John G.....Colwich, R. 1
Driscoll, James.....Wichita, R. 5
Elliott, James A.....Valley Center, R. 2
Fasbender, Nick.....Goddard, R. 2



MAPLEWOOD MATRONS
Foundation Cows of Maplewood Herd

*The Anxiety Fourth Blood Lines
Predominate in this Herd. This
Herd was Established in 1900
and descendants can be found as
far south as Old Mexico.*

STOCK FOR SALE AT ALL TIMES

A. JOHNSON, Prop.

Clearwater, Kansas

Phone 1626 Clearwater

20 Miles Southwest of Wichita on Santa Fe, Missouri Pacific and Orient Railroads.

OUR SPECIALTY

We find the bargains for you in Kansas and Oklahoma farms and ranches, and Wichita city property. If you are a buyer, see us.

We want to list all the property you have for sale. If the price is right we can sell it.

GRESHAM & HAWORTH

213-14 Bitting Bldg.

Wichita, Kansas.

OVER 30 YEARS OF PROGRESSIVE BUSINESS PRINCIPLES AND SELLING



WALL PAPER AND PAINTS

has been the means of winning implicit confidence of our customers in Sedgwick and surrounding counties.

We Sell
The Following



And Recommend
Known Quality Brands

Pratt & Lambert's Varnishes and Enamels
Waggener's White Lead and Zinc Mixed Paints

We Also Make a Specialty of Picture Framing

YOUNG BROTHERS WALL PAPER AND PAINT CO.

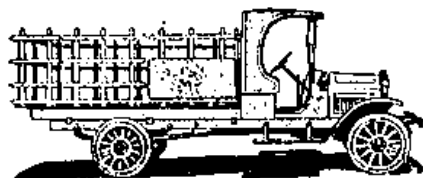
142 North Main Street

L. R. Dumbell, Mgr.

Wichita, Kansas

Stewart

MOTOR TRUCKS



CHASSIS PRICES

3/4-Ton	\$1350
1-Ton	1750
1 1/2-Ton	2250
2-Ton	2875
3 1/2-Ton	3895

f. o. b. Buffalo

HIGH-GRADE STEWARTS COST LESS TO RUN

Many owners tell us that their "Stewarts" cost about 20% less to run than other trucks they have used. This gratifying result is due to Stewart simplified design which eliminates hundreds of needless parts, giving you a simpler and stronger truck. The tire mileage of the Stewart is really exceptional—gasoline and oil consumption is low. The repair shop is almost a stranger to the Stewart. And these high-grade Stewarts cost \$200 to \$300 less than the average price of other trucks.

Buy a Stewart and join the big family of thousands of satisfied Stewart users.

Quality Trucks Since 1912

E. G. BOLZ & SON

237-239 W. Douglas

Wichita, Kansas

- | | | | |
|--------------------------|---------------------|-------------------------|----------------------|
| Faulkner, John H..... | Viola, R. 1 | Loomis, Ralph.. | Garden Plain, Box 50 |
| *Frey, John G..... | Wichita, R. 4 | Lucas, Robert C..... | Bayneville, R. 1 |
| Froman, Nelson.... | Valley Center, R. 2 | McCann, J. Arthur..... | Furley, R. 1 |
| Gang, Ott B..... | Cheney, R. 3 | McClure, William H.... | Cheney, R. 3 |
| *Glaser, Albert..... | Wichita, R. 6 | McCormick, Arthur E.... | Oatville, R. 1 |
| *Graham, R. M..... | Viola, R. 1 | McGlade, Frank S..... | Wichita, R. 1 |
| Grandfield, George T.... | Wichita, R. 9 | Martin, Edward..... | Colwich, R. 2 |
| Gutschenritter, A. O.... | Mt. Hope, R. 1 | Matthews, Earl J.... | Clearwater, R. 1 |
| *Hall, Orrin B..... | Oatville, R. 1 | *Means, Marcus C..... | Derby, R. 3 |
| Hammersky, Anton J.... | Cheney, R. 3 | Meyer, Henry, Sr..... | Cheney, R. 2 |
| Hare, Lawrence W..... | Viola, R. 1 | Miller, Robert E..... | Goddard, R. 2 |
| *Harmon, John S..... | Bayneville, R. 1 | More, J. I..... | Anness, R. 1 |
| Haughey, Robert F..... | Wichita, R. 6 | Nelson, David W..... | Viola, R. 1 |
| *Hein, F. W..... | Andale, R. 1 | Nelson, James..... | Haysville, Box 104 |
| Hein, J. J..... | Andale, R. 1 | *Owen, Walter R..... | Wichita, R. 6 |
| Hogle, R. H..... | Wichita, R. 3 | *Palmer, Charlie B..... | Wichita, R. 7 |
| Hyde, Arthur S..... | Colwich, R. 1 | Palsmerer, Henry.. | Garden Plain, R. 1 |
| Jacob, Arthur W.. | Valley Center, R. 3 | Patterson, Charles..... | Furley, R. 1 |
| Johnson, H. G..... | Clearwater, R. 2 | *Popp, John..... | Peck, R. 1 |
| *Johnston, Clark V.... | Greenwich, R. 1 | Raymond, Charles R... | Sedgwick, R. 3 |
| Jordan, Obed..... | Furley, R. 1 | *Rich, Carl V..... | Wichita, R. 6 |
| *Kabureck, Joseph..... | Viola, Box 206 | Richardson, J. S..... | Valley Ctr., R. 1 |
| Knebler, John J..... | Bayneville, R. 1 | Rickard, C. W..... | Wichita, R. 1 |
| Koster, George, Sr.. | Garden Plain, R. 1 | *Salter, Park E..... | Wichita |
| Kraus, Simon..... | Andale, R. 1 | Scheer, Math..... | Garden Plain, R. 1 |
| Lampe, Joe..... | Garden Plain, R. 1 | Scott, Anson S..... | Wichita, R. 3 |
| Landwehr, Joe H..... | Andale, R. 1 | *Selwert, Edward..... | Andale, R. 1 |
| Landwehr, Phillip..... | Andale, R. 1 | *Shipley, C. W..... | Goddard, R. 2 |
| Lewis, John..... | Valley Center, R. 1 | Shipley, Samuel..... | Goddard, R. 2 |
| Linnebur, F. A.... | Garden Plain, R. 1 | Simon, Frank M..... | Colwich, R. 2 |
| *Long, Robert M..... | Derby, R. 3 | Small, Alex J... | Conway Springs, R. 3 |

THE KANSAS FARMER AND MAIL & BREEZE DIRECTORY

Small, R. C. Amess, R. 1
 Smith, William Wichita, R. 7
 Spexarth, Bernard J. Colwich, R. 1
 Spunler, Howard H. Cheney, R. 2
 Thome, Mike Andale, R. 1
 *Thompson, L. J. Garden Plain, R. 1
 Thrift, C. A. Conway Springs, R. 2
 Ulbrich, Robert A. Sedgwick, R. 1
 Watson, Joseph Valley Center, R. 3
 *Weir, Robert S. Outville, R. 1
 *Wetta, John B. Andale, R. 1
 Whitmer, William H. Derby, R. 1
 Williamson, C. K. Cheney, R. 2
 Woodard, Vollie L. Maize, R. 1
 *Wulf, Bernard G. Cheney, R. 2
 Yarberry, Frank Garden Plain, R. 1
 *Young, William A. Clearwater, R. 1

Andra, John Andale, R. 1
 *Appleman, George B. Mulvane, R. 1
 Austin, Joe Derby, R. 2
 *Baxter, W. S. Derby, R. 2
 Beard, Ezra E. Derby, R. 3
 Bian, W. E. Derby, Box 21
 Bolton, S. H. Greenwich, R. 1
 Botts, Arthur D. Valley Center, R. 3
 *Bowman, Paul E. Wichita, R. 6
 Bradfield, F. P. Derby, R. 2
 Brewer, Arthur Mulvane, R. 2
 *Brewer, B. C. Mulvane, R. 2
 *Brookings, Edgar R. Wichita, R. 6
 *Brookings, John G. Wichita, R. 6
 *Brooks, Fred M. Wichita, R. 7
 *Brown, Ellsworth, Sr. Wichita, R. 6
 Brush, William H. Wichita, R. 3
 Buck, William A. Derby, R. 2
 Burress, Lee A. Derby, R. 1
 Cherry, Clyde L. Derby, R. 3
 Compton, A. J. Milton, R. 1
 Cowan, Charles M. Derby, R. 2
 Craig, Charlie G. Wichita, R. 8
 *Cramer, Adam A. Bayneville, R. 1
 Cummins, Ardie L. Maize, R. 1
 Custer, I. Wichita, R. 9
 Dotzaur, Royer P. Wichita, R. 9
 Dunn, John Wichita, R. 1
 Evans, Louis A. Derby, R. 3
 *Fleming, Wayne Derby, R. 2

DAIRY CATTLE

AYRSHIRE

*Frame, Lee O. Wichita, R. 3
 Roy, Earl L. Valley Center, R. 1
 Shank, Kerou L. Wichita, R. 5

GUERNSEY

Fry, Daniel A. Sedgwick, R. 3
 Rogner, Andrew Andale, R. 1

HOLSTEIN-FRIESIAN

Addis, Abe Wichita, R. 7
 Anderson, James W. Wichita, R. 1

PAUL & PENLEY

Farm Machinery

Vehicles, Wagons, Windmills, Shelf and Heavy Hardware, Paints and Oils, Glass
 Plumbing Goods and Harness.

We Sell
 The Following



And Recommend
 Known Quality Goods

Louden Barn Equipment, Deere and McCormick Binders, Deere Corn Planters, I. H. C. Ensilage Cutters, Deere and I. H. C. Corn Planters, Deere and I. H. C. Cultivators, Deere and I. H. C. Disc Harrows, I. H. C. Feed Grinders, American Fence, Iowa Gates, I. H. C. Gas Engines, Deere Hay Loaders, I. H. C. Hay Rakes, Deere and I. H. C. Manure Spreaders, Titan Tractors, Primrose Cream Separators, Swift's Fertilizer, Round Oak Furnaces, Stoves, Gas Engines, Monarch 100% Pure Paints, Safety Hatch Incubators, Peninsular and Quick Meal Gas Stoves, Racine and Case Threshers.

Stores at Mulvane and Augusta

Phone 32

ORY

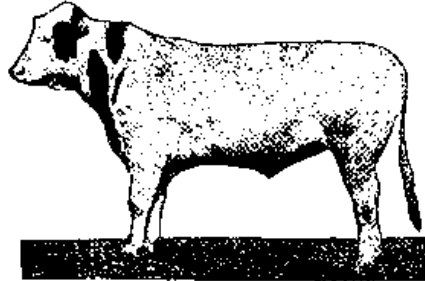
M.R.1
M.R.1
T.R.2
T.R.2
T.R.3
Bor.21
R.R.1
T.R.3
A.R.6
T.R.2
e.R.2
e.R.2
R.R.6
A.R.6
L.R.7
L.R.6
L.R.3
R.R.2
R.R.1
R.R.1
L.R.1
R.R.2
R.R.3
R.R.1
R.R.1
R.R.9
R.R.9
R.R.1
R.R.3
R.R.2

OF FARMERS AND BREEDERS OF SEDGWICK COUNTY

F. H. Bock & Sons

R. F. D. No. 9, Wichita, Kansas.

Breeders of Holstein-Friesian Cattle, Duroc Jersey Hogs
and Black and Tan Collies, Natural Heelers.



King Segis Pontiac Howel Wayne of Mapleside, No. 216354. At the head of our herd. His four nearest dams nearly averaged 1,000 pounds of butter in one year. His dam at 10 years old made 1,069 pounds of butter in 365 days. Her dam made 904 pounds in 346 days. His sire's dam as a 2-year-old made 733 pounds in 365 days. His grand dam made 1,271 pounds of butter in 365 days.

More cows in our herd averaging over 80 pounds of milk per day than any other herd of its size in the state.

We make seven-day and yearly records. Our mature cows made from 17 to nearly 34 pounds of butter in 7 days. Our records are made on ordinary dairy condition. We need the milk and will sell bull calves cheap if taken at 30 days old.



Duroc Jersey Hogs.

We breed the large type, heavy bone, long-backed Pathfinder and Orion blood lines. Male pigs for sale at farmers' prices. All females are being sold at public auction when bred. These hogs are fed on skim milk, which develops a heavy bone and good, strong feet which will not break down when carrying the fat.



Black and Tan Registered Collies.

If you are a stock raiser, then you can't do without a sensible black and tan collie. The stock will like him and he will do good work for you.



BUFFALO ARTHEUSA JOHANNA 153942

She is the Mother Superior to our herd and heads our Famous Johanna Family. She was the first cow in the state to milk over 100 pounds in 24 hours. Her 2-year-old daughter, Johanna Korndyke Pet 417636 broke the state record for butter production as a senior 2-year-old.

Our herd combines the blood of King of the Pontiac and Pictortje Maid Ormsby. Bulls for sale at all times. Also a few females.

B. R. GOSNEY, Mulvane, Kansas

- | | | | |
|--------------------------|---------------------|-------------------------|---------------------|
| Flower, Dwight E..... | Mulvane, R. 2 | Keys, Joe E..... | Wichita, R. 3 |
| Fritz, Paul W..... | Wichita, R. 9 | *Kirby, Arthur..... | Wichita, R. 6 |
| Galbraith, Charles A.... | Cheney, R. 2 | *Kramberg, Chris..... | Wichita, R. 6 |
| Garver, Melvin V..... | Wichita, R. 4 | Krum, William C..... | Wichita, R. 4 |
| *Goodin, Collier L..... | Derby, R. 2 | Lambky, William C.... | Mulvane, R. 1 |
| Goodin, Roy R..... | Derby, R. 2 | Larimer, Wirt..... | Derby, R. 1 |
| *Gosney, B. R..... | Mulvane, R. 1 | *Lasson, James..... | Derby, R. 1 |
| *Graham, R. M..... | Viola, R. 1 | Lauchland, James A.. | Valley Ctr., R. 3 |
| Grier, Andrew..... | Viola, R. 1 | Lawson, James..... | Derby, R. 1 |
| *Grother, Carl..... | Wichita, R. 6 | *Lendertse, Jacob M.... | Oatville, R. 1 |
| *Guest, Norman..... | Wichita, R. 6 | Little, Francis T..... | Wichita, R. 9 |
| Hadley, Lawrence N.. | Valley Ctr., R. 3 | Lloyd, Charles G.. | Valley Center, R. 3 |
| Hamilton Brothers..... | Derby, R. 2 | *Long, Harry..... | Clearwater, R. 1 |
| *Hamilton, Walter E.... | Derby, R. 3 | Long, Irvin D..... | Wichita, R. 1 |
| *Hansen, William H.... | Sedgwick, R. 3 | *Loomis, A. D..... | Cheney, R. 2 |
| *Hannon, Leonard L.... | Wichita, R. 6 | *McClaghry, C. A..... | Wichita, R. 4 |
| Heller, A. L..... | Derby, R. 2 | McKenzie, Anne L.... | Mulvane, R. 1 |
| *High, C. P..... | Derby, R. 2 | *McKnight, O. B..... | Derby, R. 2 |
| *High, O. G..... | Derby, R. 2 | *McMillen, Bonar S.... | Wichita, R. 6 |
| *Hohn, Hobert..... | Wichita, R. 8 | Martin, C. R..... | Mulvane, Box 151 |
| Hopkins, Robert E.... | Derby, R. 2 | Messmer, Fred A..... | Anness |
| Hostetter, Florence.... | Wichita, R. 1 | Miers, A. C..... | Mulvane, R. 2 |
| Humboldt, William.... | Mulvane, R. 2 | Miller, A. N..... | Viola, R. 1 |
| *Jeffries, Howard T.... | Mulvane, R. 1 | *Miller, Elmer E..... | Wichita, R. 6 |
| Johnson, George..... | Wichita, R. 7 | *Miller, Howard E.... | Wichita, R. 6 |
| *Jones, William A..... | Peck, R. 1 | *Miller, S. A..... | Derby, R. 2 |
| Kell, Robert C..... | Derby, R. 1 | Miller, William J.... | Wichita, R. 1 |
| Kelso, Van R..... | Valley Center, R. 3 | Mohr, Christan..... | Derby, R. 1 |
| Kersey, Walter R..... | Derby, R. 1 | Mohr, Simon..... | Derby, R. 1 |

OF FARMERS AND BREEDERS OF SEDGWICK COUNTY

- Moreland, H. J.....Mt. Hope, R. 1
- Morgan, Freeman.....Wichita, R. 1
- Muma, Harry C.....Mulze, R. 1
- Neville, Edward L.....Wichita, R. 8
- Nighswonger, Sol.....Clearwater, R. 2
- *Ogden, Harvey N....Bayneville, R. 1
- Orth, Frank.....Mt. Hope, R. 2
- *Palmer, Wilbur.....Derby, R. 1
- Parrish, Austin S.....Derby, R. 2
- Peck, Boston R.....Wichita, R. 7
- Peters, Fillmore...Valley Center, R. 2
- *Phillips, L. C.....Cheney, R. 2
- *Pipkin, Oscar S....Garden Plain, R. 1
- Potts, William H.....Wichita, R. 3
- *Pray, George F.....Wichita, R. 4
- *Pray, Leman F.....Wichita, R. 4
- Pringle, James R.....Wichita, R. 1
- Reeves, G. C.....Mulvane, R. 1
- Rhodes, A. J.....Douglas, R. 1
- *Rick, J. T.....Derby, R. 3
- *Rippel, Edward C....Derby, Box 143
- Sandusky, Cassius M....Wichita, R. 9
- Salmans, Oscar R.....Wichita, R. 8
- *Schmallian, Rosa.....Peck, R. 1
- Schmitz, Theo. A.....Oatville, R. 1
- *Scott, M. B.....Wichita, R. 6
- *Scott, Virgil S.....Derby, R. 2
- *Seekamp, Fred N.....Mulvane, R. 1
- Seiwert, John.....Goddard, R. 1
- *Small, Edward P. G.....Clearwater
- Smith, Joseph M.....Wichita, R. 9
- Smith, Ohp.....Derby, R. 2
- Smith, T. Walter.....Wichita, R. 2
- Smith, Richard C.....Sedgwick, R. 1
- *Somers, Clarence L.....Wichita, R. 6
- *Springob, Peter.....Oatville, R. 1
- States, G. H.....Derby, R. 2
- Stevens, Frank.....Colwich, R. 1
- Stinson, C. E.....Viola, R. 1
- Streich, Louis.....Wichita, R. 4
- *Stuckey, Grover D.....Wichita, R. 6
- *Stuckey, Willis L.....Wichita, R. 6
- Sull, Thomas B.....Mulvane, R. 2
- Sullard, Harry H.....Wichita, R. 9
- *Swaney, Frank W.....Derby, R. 3
- Sweatland, Lester.....Mt. Hope, R. 1
- *Swinchart, Eugene V....Derby, R. 2
- *Tenboer, Henry.....Wichita, R. 7
- Tillotson, Charlie.....Derby, R. 1
- *Tracy, Forest H.....Oatville, R. 1
- Turkle, H. D.....Mulvane, R. 2
- *Van Norris, Claude.....Wichita, R. 5
- *Vilm, Nicholas M.....Wichita, R. 7
- Voegeli, John J.....Colwich, R. 2
- Wall, Walter.....Anness, R. 1
- Walling, Vernon.....Wichita, R. 1
- Waples, A. R.....Wichita, R. 5
- *Watkins, G. L.....Derby, R. 2
- Weddle, William T....Wichita, R. 2
- *Weninger, Michael.....Oatville, R. 1
- Williams, Roland H...Sedgwick, R. 2
- *Wilson, Guy E.....Wichita, R. 6

Family
 Address
 Derby

Wich. R. 3
 Wichita, R. 6
 Wichita, R. 6
 Wichita, R. 4
 Fane, R. 1
 Derby, R. 1
 Derby, R. 1
 Ctr., R. 3
 Derby, R. 1
 Wichita, R. 1
 Wichita, R. 9
 Anness, R. 3
 Fane, R. 1
 Wichita, R. 1
 Derby, R. 2
 Wichita, R. 4
 Fane, R. 1
 Derby, R. 1
 Wichita, R. 6
 A. Box 151
 Address
 Fane, R. 1
 Fane, R. 1
 Wichita, R. 4
 Wichita, R. 4
 Derby, R. 1
 Derby, R. 1
 Derby, R. 1

Goodin's Stock Farm

Breeders of Pure Bred Holstein Cattle

HERD SIRES
KING HENGERVELD PIETERTJE FANE
SIR AAGGIE KORNDYKE MEAD
 whose services are for sale.

R. A. Records up to 26 lbs.
 Junior 4-year-olds
 Cows on yearly test

Stock For Sale at All Times

C. L. GOODIN, Prop.

Three Miles East, One Mile North of Derby. Phone Derby 3807.

THE KANSAS FARMER AND MAIL & BREEZE DIRECTORY

OFFICERS AND DIRECTORS

W. C. Robinson, President
C. F. Hough, Cashier
S. F. Kimble, Asst. Cashier
C. G. Canaday
A. Huffbauer, Vice Pres.
S. G. Campbell, Asst. Cashier
Fred Wagner

Established 1886

THE MULVANE STATE BANK

Mulvane, Kansas

Capital\$ 25,000.00
Surplus\$ 25,000.00
Total Resources\$600,000.00

4% Interest Paid on Time Deposits

This bank has always taken every known precaution to protect and safeguard the interests of its depositors, and solicits your business with full confidence that it can care for every emergency.

The deposits in this bank are protected by the Depositors Guaranty Fund of the State of Kansas.

PHONE 50

A. G. MUELLER

Undertaker and Embalmer

Complete Motor Equipment

Quality Caskets—Reasonable Prices with Best of Service

Telephone Day or Night Market 325

Motor Ambulance, For Sick, Always At Your Service.

142 N. Market St.

Wichita, Kan.

GOODIN MOTOR SERVICE

Automotive Equipment and Repairs
Authorized Sales and Service Station for

Rayfield Carburetors.
Eveready Storage
Batteries.
Auto-Lite.



Connecticut and Atwater
Kent Ignition.
Timken, Hyatt and New
Departure Bearings.

333 S. Lawrence Ave.

Wichita, Kansas

OF FARMERS AND BREEDERS OF SEDGWICK COUNTY



Sir Aaggie Korndyke Mead, Born November 15, 1918.

This young bull is one of the greatest bred long distance bulls of the breed. The records of his five nearest dams average: Butter, 365 days, 1096.29 lbs.; milk, 23,504.10 lbs. His five nearest dams and dam's two sisters average, butter, 1146 lbs.; milk, 23,667 lbs. He is the only bull in the world that has a 950-lb. dam that has two sisters over 1200 lbs., strictly official tested. This bull has 50 per cent of these two great sisters' blood. His sire is from the famous 1331-lb. cow, Aaggie Acme of Riverside 2d, who holds the world's championship for strictly official year butter record. His dam's sire is a full brother to a 1000-lb. senior 4-year-old. The sire's sire is from the 1100-lb. cow, Aralia De Kol, who has two 1100-lb. daughters. His sire carries 75 per cent the same blood as King Segis Pontiac Count, whose daughters have broken many year records. The dam's sire is a sister to Queen Juliana Dirkje (3½ yr., 1021.72 lbs.), an ex-world's champion. This bull is a true aristocrat.

The services of this bull are available for a limited number of cows.

Quality, not quantity, is what we want to breed to.

For Full Particulars Address

**C. B. McKNIGHT
HIGH BROS.**

**GOODIN BROS
EUGENE SWINEHART**

Or Call Rosehill 216, Derby, Kansas.

Alexander & Belford

302-303 Fourth National Bank
Building

—
Lands Worth the
Money
—

Phone Mkt. 579
WICHITA

WHEN you go into a bank
day after day—year after
year—with that “nobody
knows me” feeling, it is time
to change banks.

—
You Won't Have That Feeling
If You Bank With Us.

—
Farmers' Accounts
Our Specialty
—

The Exchange State Bank
Douglas Ave. at Washington
WICHITA

C. L. Somers

Breeder of Pure Bred, Registered Holstein-Friesian Cattle



Tuberculin Tested

All Good Producers

Postoffice Address: Rural Route 6, Wichita, Kansas.

Farm Located 2½ Miles West of Derby

Inspection Invited

OF FARMERS AND BREEDERS OF SEDGWICK COUNTY

Wilson, Robert W....Annes, Gen. Del.
 Wiske, W. C.....Garden Plain, R. 1
 Wood, James H...Valley Center, R. 1
 Woodard, Vollie L.....Maize, R. 1
 Yoder, Heman.....Cheney, Gen. Del.
 Young, Robert C.....Colwich, R. 1
 *Yungmeyer, J. M., Sr...Wichita, R. 6
 Yungmeyer, Oscar A....Wichita, R. 6

JERSEY

Baker, William P.....Furley, R. 1
 Brand, George J...Garden Plain, R. 1
 De Witt, Arthur C.....Wichita, R. 3
 Gorman, David F....Greenwich, R. 1
 Ewertz, M. J.....Maize, R. 1
 Halderman, C. H.....Goddard, R. 2
 Hickling, C. J.....Mt. Hope, Box 21
 Hutchinson, Sauford S..Goddard, R. 2
 *June, William.....Wichita, R. 6
 Koster, George, Sr..Garden Plain, R. 1
 Landon, George W.....Wichita, R. 1
 *Lill, Percy E.....Mt. Hope, R. 2
 Lockard, John A.....Wichita, R. 1
 McPherson, Samuel W..Wichita, R. 9
 Marsh, William H....Valley Center
 Nebergall, Clyde...Valley Center, R. 1
 *Palmer, Charlie B.....Wichita, R. 7
 *Pipkin, Oscar S...Garden Plain, R. 1
 Pruitt, John H.....Goddard, R. 2
 Robinson, William J.....Viola, R. 1
 Roll, Frank D.....Wichita, Gen. Del.

Roof, Donald S.....Maize, R. 1
 Roof, William J.....Maize, R. 1
 Schauf, William.....Cheney, R. 3
 Shepherd, Nelson J....Sedgwick, R. 1
 *Shouts, David.....Wichita, R. 8
 Simerl, George D.....Sedgwick, R. 3
 Stauffer, Andrew G..Valley Ctr., R. 1
 Stauffer, Paul J..Valley Center, R. 1
 Sullivan, Elizabeth D...Wichita, R. 1
 Sullivan, Robert D. R...Wichita, R. 1
 Thompson, Douglas...Valley Ctr., R. 1

HOGS

HAMPSHIRE

*Brookings, Edgar R....Wichita, R. 6
 *Brookings, John G....Wichita, R. 6
 Bush, Frank.....Mulvane, R. 2
 Lower, Archie.....Wichita, R. 4
 *Shaw, Walter.....Wichita, R. 6
 Yazel, Gene L.....Furley, R. 1

O. I. CHESTER WHITE

Carey, Joshua....Valley Center, R. 2
 *Davidson, Thomas S....Derby, R. 3
 Ewertz, M. J.....Maize, R. 1
 Grier, Andrew.....Viola, R. 1
 *Hannon, Leonard L....Wichita, R. 6
 Hill, Loren A.....Maize, R. 1
 Hilliard, John L.....Sedgwick, R. 1

GLASGOW TAILORS AND HATTERS

Ladies' and Gents' Hats Cleaned and Re-blocked Any Shape or Style

Also remember that when you want your clothes cleaned or hats blocked, wrap them and give them to your rural route carrier and we will return them to you postage prepaid.

SUITS AND OVERCOATS MADE TO ORDER

109 S. Lawrence St.

Phone Mkt. 533

Second Door South of Princess Theatre

Allender Sewing Machine Exchange

224 North Main

Phone Mkt. 1533

Rebuilt and Guaranteed Machines, All Makes and Prices.

Also All Makes of New Machines.

General Novelty Repair Shop

Before Buying That Sewing Machine, Do Not Fail to See Our Stock and Get Prices.